



BearCreeks

Born to be free

Scavenger User Guide 5.8GHz

BearCreeks GmbH Marie-Curie-Str. 6, 85055 Ingolstadt, Germany

Tel: +49 841 13803990 Fax: +49 841 13803988

www.bearcreeks.com E-Mail: sales@bearcreeks.com

! Important Information



To ensure the continued high performance of your Scavenger Bait Boat, it is important that you read and undertake the following recommendations:

- Never leave the boat in direct sunlight as this causes the boat to become very hot and 0 condensation can build up and cause problems with internal components
- In periods of inactivity ensure the batteries are disconnected from the boat and handset batteries are not left in the handset
- Ensure all batteries are fully charged before you pack the boat away for the next trip
 - It is recommended to use a bankside or solar charger to top up the battery after every trip
 - The boat and handset batteries should be stored outside the boat and handset
 - **Charge all batteries every 2 months to ensure they remain fully charged to prolong their working life. Even if the boat is not going to be used for some months, recharge the batteries every 2-3 months to ensure their durability.**
 - When inside the boat, make sure the battery is fixed and stable, this will prevent the damage of cables and other inner components
- Never overcharge the batteries. Turn chargers off when they indicate the battery is fully charged
- Store your bait boat in a dry environment. It is not recommended to store in garages, sheds or attics
- When the boat is being stored for long periods of time turn the boat on and run it shortly to ensure the motors are kept in good condition and to avoid seizing
- Ensure no wet particles are left inside the boat
- When finished using the boat, clean it with a damp cloth and ensure no water goes inside the boat
- Always remove the boat batteries when transporting the boat
- **Remove the boat battery when sending your boat back for service or repair.** We cannot take responsibility for any damage done by leaving the battery inside of the boat
- Ensure your boat is well packaged inside a cardboard box if sending back for a service or repair. We recommend to use the original packaging to avoid damages during shipment.
- Please disconnect the boat antenna and handset antenna after use to avoid breakage
- **In the unlikely event of a problem with your Scavenger bait boat, please contact service@bearcreeks.com**

Thank you for buying your Scavenger.

Outstanding performance and reliability have made Scavenger bait boats amongst the most popular in the world. Designed by leading anglers in conjunction with engineers and technicians, there's a bait boat in the Scavenger range to answer all of your baiting, rig placement and depth-finding needs.

Please take the time to read and understand this manual. Your Scavenger will deliver years of trouble-free usage when used and maintained correctly.



1 What you get with your Scavenger

Your Scavenger package contains the following items as standard:

- 1 **Bait boat** 1pc
- 2 **6 Channel remote control handset** 1pc
- 3 **Rechargeable battery for the bait boat** 1pc
- 4 **Rechargeable batteries** for the remote control handset 4pcs
- 5 **Home charger for bait boat** 1pc
- 6 **Home charger for handset** 1pc
- 7 **Rubber antenna for bait boat** 1pc

** For optional accessories (available separately) please see section 8 of this manual.*

2 Technical specifications

Product model: Scavenger

Dimensions: (L x W x H): 680mm x 490mm x 250mm

Weight: 10.8kg – including handset and batteries

Hoppers: 2 independent

Bait capacity: 4kg approx.

Maximum speed: 60m/minute with weed guard,
100m/minute without weed guard

Electrical system: 12V DC

Range: 500m +/- dependant on weather and environmental conditions

Lights: 2 front, 2 rear, 1 port, 1 starboard, 4 battery status

Radio handset: 6 channel, 5.8GHz

Propulsion: 2 independent motors with 2 maintenance free propellers

Running time (at max speed): Lead Acid Battery - 2 hours +/-
Lithium Battery – 4 hours +/-

3 Features

The Scavenger comes with the following outstanding features:

1. **3D CAD designed**, hydro-dynamic trimaran ABS hull giving excellent stability and increased buoyancy. The upper deck and the underwater part are fixed by a stainless bolt, which makes the maintenance very easy. The waterproof silicon gasket between the upper deck and the hull ensures the boat is 100% waterproof.
2. **5.8GHz 6 channel radio system**, delivering superb range with less interference. The handset range is 500m +/- dependant on weather and environmental conditions. The handset charger and its AA rechargeable batteries come as standard.
3. **Microprocessor controlled variable speed in forward and reverse**. Power to the motors is regulated through a microprocessor to give you unrivalled maneuverability and response.
4. **Optional 'Autopilot' function**, which allows your bait boat to steer automatically, with complete accuracy, to as many as 20 preordained points and return.
5. **Built-in fail-safe** means you won't lose your boat. When the signal is weak, the boat will stop going forward and it will automatically drive in a circle until it finds a strong signal and comes back into full control.
6. **Internationally patented twin independent hoppers**. The two hoppers can be individually opened and due to their design will contain and drop even the smallest particles efficiently.
7. **Internationally patented twin independent hook (rig) release system** can be used to place two rigs and drop them individually.
8. **Two quality, quiet direct drive motors and propellers** deliver optimum performance and prolong battery life.
9. **Stainless steel weed guards** ensure that weed, line and detritus do not foul the propellers or impede performance.
10. **Waterproof rocker switches**. All switches and charging sockets are waterproof.
11. **Six ultra high intensity LED lights** are ultra-visible at range, even in daylight.
12. **Tri-colored battery condition meters** for accurate boat battery condition information. When the battery is fully charged all lights on the meter will light up; when the battery is running at its lowest charge, the red light on the meter will light up.
13. **Remote control lighting**. All lights can be turned on and off from the handset when your boat is in use. **Please note that headlights only turn on when the boats lights are turned on and the boat is driving forward.**
14. **Handset battery condition meter** for accurate handset battery condition information. When the battery is fully charged all lights on the meter will light up; when the battery is running at its lowest charge, the red light on the meter will light up.
15. **Watertight removable battery system** in the central hull provides easy access to change the battery. Changing the main boat battery takes only seconds.
16. **Wireless fish finder**. Our optional fish finders are designed for bait boat usage and enable fantastically accurate bait placement to specific features and depths. Greyscale or color monitors deliver incredibly detailed information with all the extras available, such as GPS, zoom, bottom hardness etc that you would expect from any fish finder.
17. **2 year warranty and unrivalled after-sales support**. Every registered Scavenger is supported by our comprehensive 2 year warranty and full service and maintenance facility to ensure the ongoing performance.

4 Charging and battery maintenance

Notes:

Do not plug the battery into fish finder cable. The fish finder cable is easily identified by its 'L' shaped connection (right) and clear labelling saying "POWER CABLE FOR THE FISH FINDER".



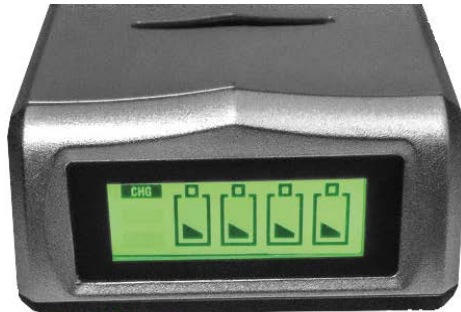
- To ensure trouble-free charging, only use the chargers supplied by BearCreeks.
- Please make sure that both the boat and handset are switched off while being charged.
- When you receive your Scavenger, fully charge all batteries.
- When the green light indicates your battery is charged, always remove batteries from the charger.
- First charge of a new battery to fully charged will take approximately 8 hours.
- Dry cell batteries (non-rechargeable) may be used in the handset.

Warning: Please do not attempt to charge the handset with non-chargeable batteries in use.

Charging the handset batteries

Charging the handset batteries with home charger

1. When the voltage of the handset is less than 4.2V, a buzzer will sound and the handset cannot be used until charged.
2. Take the 4 batteries out of the handset and put them into the charger. Then plug the charger in.
3. The display will show "CHG" and the icons will move constantly.
4. When the icons are full and stop moving, the batteries are fully charged. This will take around 7 hours for discharged batteries.
5. There is also a discharge function on the charger. Insert the batteries, connect to power and press the function key on the side of the charger for 3 seconds. The display will change to "DISCHG". This will normally not be needed.



Charging the boat battery

Charging the boat battery with home Charger

1. Connect the connector of the battery wire to the connector of the home charger.
2. Plug the charger into the wall socket. A red light will illuminate to indicate that your battery is not charged.
3. When the light on the charger turns from red to green, the battery is fully charged.

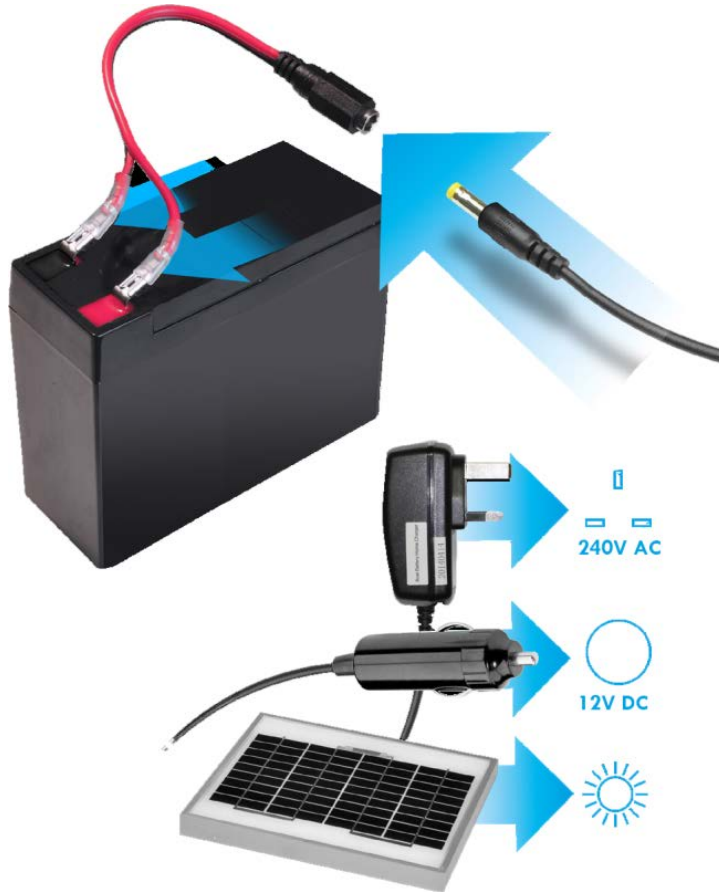
Note: As with the handset, the boat battery can be charged via our optional car charger or solar panel.

Every type of batteries (lead-acid or lithium) can be charged inside as well as outside of the boat.

You can charge your battery directly, without taking it out of the boat, via the charging socket on the rear of the boat. Please be sure the power switch is OFF.

Warning:

The lead-acid battery will release some gas when being charged. Please make sure that the battery cover is opened when you charge the boat in order to avoid pressure building up inside the boat, which could cause serious damage.



5 Using your BearCreeks Scavenger Handset



A Antenna: Stout design for strength

B Forward: Push the right hand joystick forward.

C Reverse: Push the right hand joystick backward.

D Turn left: Push the right hand joystick left.

E Turn right: Push the right hand joystick right.

F Release the rig (hook): Push the left hand joystick left.

G Open the bait hopper: Push the left hand joystick right.

Please note: because Scavenger has 2 separate hoppers and 2 separate hook release systems, at first, the left one will open, then the right one. Joystick movements remain the same.

The left joystick (with the help of which you open the hopper doors and release the hook) is very sensitive, you just need to slightly push the joystick to the left or right and the needed function will be performed.

Important: do not continuously press the joystick, this will lead to magnets burnout and might damage the wiring.

The right joystick (with the help of which you direct the boat) can be brought to the steady position, so that when you want to bring the boat 500m forward, you do not need to constantly press the joystick. It is enough to bring it to the steady position once and then manually bring it to the neutral position, when you would like to stop the boat.

H/I Turn Lights on/off: Push the left hand joystick up or down to turn the lights on and off from range. Exact information about the status of the boat is displayed when the lights are on. To save power and prolong battery life, turn the lights off when not needed.

J VRA trim: Roll this switch left or right to equalize thrust, so your boat goes straight when the right hand joystick is in the forward position.

Always start with the dial in the middle position (3 o'clock) and adjust accordingly.



VRB trim (Voltage indicators trim): Roll this switch left or right to adjust the voltage indication numbers on the display of your handset

L Lanyard attachment loop: attach the lanyard strap (optional).

M Display screen



Voltage of handset: When the voltage is less than 4.2V, the buzzer will sound and the handset cannot be used until charged.



Warning voltage: The setting range is 8.00V – 11.00V and this can be adjusted using the VRB button, according to the type of boat and batteries. Recommended setting normally 9.5V.



Voltage of boat: When the voltage is less than the warning voltage, the buzzer will sound and the boat should be returned to the bank.

<i>Battery</i>	<i>Warning Voltage</i>
Lead-acid battery	9.8V
Lithium Battery	9.8V

NOTE: It is worth considering purchasing a replacement set of batteries as a stand-by, to use when the original set are being charged.

N Handset battery power indicator

O Boat battery power indicator.

P Program button: press the button for the screen display

Q Main on/off switch: turns the power of the remote control on or off.

R Battery box: insert 4 x 1.2V 1500Mah Ni-MH batteries

S Battery cover



6 Using your BearCreeks Scavenger

Loading and dropping your bait

The left hand joystick (direction to the right) operates the bait hopper door.

1. Insert your rig into a hopper, if desired, by passing it under the boat and up through the hopper.
2. Close the hopper door manually from below, ensuring 'click' closure.
3. Load the bait hopper with your chosen bait.
4. Navigate your boat to your chosen spot
5. Move the left hand joystick RIGHT to drop the bait hopper door. The blue hopper LED in the back centre of the boat will flash 6 times to confirm the release of your bait.

Loading and releasing your rig

The left hand joystick (direction to the left) operates the hook (rig) release system.

1. Insert your line, rig or hook on the hook release system pin situated on the back of the boat.
2. Push the left hand joystick LEFT to release the line, rig or hook. The white hook LED in the back centre of the boat will flash 6 times to confirm the release of your hook.

How to locate the signal

1. Push both the left and right joystick to the middle and lower 45 degrees (see diagram) and turn on the handset at the same time. The screen should now display "RX Binding".
2. Turn the boat on.
3. Several seconds later, the screen will display "RX Bind OK" which means a signal has been found. The blue signal lights at the rear of the boat will be on.
4. If the blue signal lights are not on, the signal has not been found. Repeat the above steps.



Trimming the motor

Differing loads, foreign bodies in the propellers plus wind and water conditions mean that any bait boat will not always drive straight. Use the motor trim roller on the upper-left of the remote control handset to adjust ('trim') the motors so your boat drives straight when the right hand joystick is in the forward (12 o'clock) position

1. Adjust the motor trim roller (A) anti-clockwise and the boat will steer left.
2. Turn the motor trim roller (A) clockwise and the boat will steer right.

On returning to the bank

1. Do not stop or pick up the boat by the aerial, as damage will occur.
2. Switch off the boat first and then the handset.

Notes

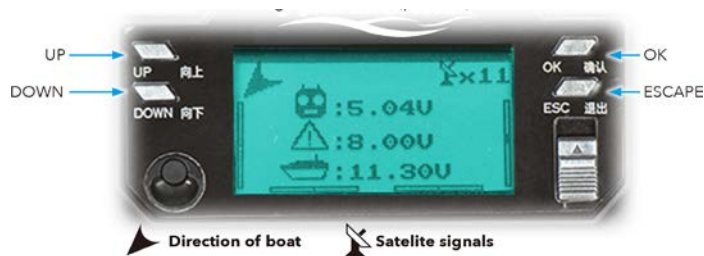
- Always turn the handset on first and then the boat. To turn off, turn off the boat first and then the handset. This will ensure that you are always in control of the boat.
- The handset should be protected from water at all times. The optional rain cover can be purchased from BearCreeks.
- Continued starting, stopping and reversing of the boat drains the battery. Smooth operation at all times is recommended to ensure optimum battery life.
 - Pushing the right (steering and speed) joystick quickly to its extremes will put more stress on the electrical components and the battery.
 - Decreasing your speed slightly (your boat will still be very quick!) will improve battery life.
- The range of the boat is 500m+/- dependant on weather and environmental conditions. Should the signal from the handset become weak, the boat will stop going forward and it will automatically drive in a circle until it finds a strong signal and comes back into full control.

7 Autopilot

An optional BearCreeks Scavenger (Pro) feature is our ground-breaking 'Autopilot' function, which allows your bait boat to steer automatically, with complete accuracy, to as many as 20 pre-ordained points and return.

Benefits of Autopilot

1. It can save 21 different points – starting (home) point plus 20 fishing points.
2. The boat can run automatically between any saved fishing points.
3. It can calculate the effective range between starting point and fishing point.
4. It can show the longitude and latitude of the boat.
5. During the whole Autopilot process, the boat will continue to run if the signal is lost for up to 10 seconds due to environmental disturbance. If the signal is lost for more than 10 seconds, the boat will automatically go back to the starting point.
6. During the whole Autopilot process, if the boat is low on power (red indicator light on), the boat will return automatically.
7. BearCreeks is the first to use a 5.8GHz remote control for a bait boat, with a strong anti-interference ability.



Operating Autopilot

Please note that with the Autopilot Upgrade you will receive an alternative handset, featuring a control interface around the screen with 4 navigational buttons (pictured).

Turn on the remote control, then turn on the boat, wait for Autopilot signal. When the number of satellite signals is more than 8, the automatic feature can be set and operated.

If you want to quit Autopilot: When remote is in autopilot mode and you want to quit, then press ESC and press down, afterwards press OK 2x. You get the option to quit, press and hold OK button to confirm.

Geomagnetic calibration

1. When the number of satellite signals is more than 8, press OK, then press DOWN to choose the geomagnetic calibration and press OK again. This will start the horizontal calibration; turn the remote control in a 360 degree horizontal circle.
2. When the 4 parameters on the interface become stable, press OK. This will start the vertical calibration; turn the remote control in a 360 degree vertical circle.
3. Press OK again and the calibration will be complete.
4. Press ESC to go back to the main menu.

Note: It is better to set the starting point once the number of satellites is 15+ if possible. When the satellite signal is strong, accuracy of fishing points can be <1m.

The following YouTube video can be watched to understand the geomagnetic calibration better:
<https://youtu.be/Mj9cLWCpsvM>

Saving starting point and fishing points

1. Choose the starting point; take the boat onto the bank; press DOWN and enter the menu. By pressing UP/DOWN, the starting point can be chosen. Hold down OK, to confirm YES or NO. If you confirm YES, press OK again, and the starting point will be saved.
2. After saving the starting point, press ESC to return to the main menu. You will see the boat's direction, number of satellite signals, voltage of the remote, power warning and the actual voltage of the boat.
3. Note: **You should set the starting point well before the boat is in the water.** If not, the GPS cannot be found; the range between the remote control and the boat cannot be calculated and also saved fishing points cannot be called in future. When the range between the starting point and fishing point is out of the effective range of the remote control, the boat cannot travel to the fishing point automatically and will return to the starting point.
4. Place the boat in the water and direct it to where you want to go. You can save fishing points from numbers 1 to 20 and release bait & hooks accordingly. To save fishing points, follow the same process as for the starting point.
5. By pressing UP, you can see the longitude and latitude of the boat. If you press UP again, you will see the starting point and the next fishing point. Press ESC again, to go back to the main menu.

Returning to starting point or fishing points (CALL)

1. If you want to go back to the starting point or go to saved fishing points, press DOWN. The display will show SAVE, CALL and EXIT. Press OK again and choose CALL. Hold down OK and confirm YES or NO. If you confirm YES, press OK again.
2. After finishing CALL, press ESC to go back to the main menu.
3. 3 Using the operation of CALL, the boat can run automatically between any fishing points.
4. By pressing UP, you can see the longitude and latitude of the boat. If you press UP again, you will see the starting point and the next fishing point. Press ESC again, to go back to the main menu.
5. If the boat is blocked by obstacles and you need to stop the boat, press ESC and go back to the main menu. Press DOWN and the display will show SAVE, CALL and EXIT. Press EXIT and then hold down OK again. Hold down OK and confirm YES or NO. If you confirm YES, press OK again. The boat will stop automatically running. Operate the right joystick manually until you are ready to resume the automatic function.

Please Note:

1. Only use the Autopilot outdoors; the signal will be weak indoors.
2. Satellite signal is affected by weather and geographical location. Always allow 5-10 minutes from turning on the remote control to ensure the stability of the signal.
3. Autopilot will be seriously compromised if close to high-voltage sub-stations.
4. The antenna is an excellent conductor of electromagnetic waves so PLEASE DO NOT USE DURING THUNDERSTORMS.
5. Electronic compass technology is easily interfered with by the surrounding environment. Please do not use close to electromagnetic field, metal mining areas or high-voltage wires.



8

Bait Boat Optional Accessories (not included)

BC151 Wireless Color Fish Finder

BC151 wireless color fish finder was specially designed for all kinds of bait boats. It provides precise sonar detection. And with incredible stable wireless performance you can see the fish and bottom in a range over 300m distance; Sonar frequency: 115kHz, Radio frequency: 5.8Ghz, RC Distance: 300m, Display: 4.3" TFT with resolution 480*pixels; 65,536 colors; Multi Language menu

KEY FEATURES

Sonar

- Depth Capability: 40m (130ft)
- Sonar Frequency: 115Khz
- Sonar Beam Angle: 60deg @-10db
- Sonar Alarms: Fish / Shallow / Low Battery
- Water Temperature

RF

- RC Distance(field test): Max 300m (1000ft)
- Radio Frequency: 5.8Ghz
- RF Channels: 20
- RC Power: 20dBm

Display

- Display size: 4.3"TFT LCD; Sunlight Viewable
- Display Resolution: 480*272Pixels; 65,536 color
- Visible under sunlight
- Multi-language
- Monitor and Display Real-time Voltage of Bait boat Battery
- IPX6 Level Waterproof Casing Design

Features

- Display target depth reading above each fish symbol
- Displays fish targets at higher boat speeds
- Memory settings
- Rugged portable case gives the full protection to Fish finder while in storage or transport (optional)

Find more optional fish finders in our online shop: <https://www.bearcreeks.com/en/fishfinder/>

BearCreeks - 40W Camo Solar Panel

Charge your devices with unlimited free power! Featuring one USB 5V port and a 12V DC port the BearCreeks 40W Solar Panel can charge everything from your iPhone to your bait boat. Both ports can be used simultaneously meaning multiple devices can be charged at once.

The 12V DC output will charge most bait boat batteries including both the Lead and Lithium BearCreeks bait boat batteries. It can also be used to top up your power pack keeping you fully charged on even the longest of sessions.

The USB port will charge all your USB devices including phones, tablets cameras and bivvy lights.

With a highly efficient conversion ratio, the BearCreeks Solar Panel will charge your devices quickly even on overcast days. Its compact size and light weight make the BearCreeks Solar Panel easily transportable. It will comfortably fit inside your carryall or boat bag. Its durable glass free construction makes it hard wearing and suitable for the demanding environments anglers often find themselves in.

40w power

Output 5V/4A USB, 12V/3.2A DC

Weight 985g

Dimensions Open 120cm x 32cm x 20cm

Dimensions Folded 32cm x 18cm x 5cm



BearCreeks Bait Boat Bag

The main compartment is built to accommodate your bait boat (not only BearCreeks, but also many others). Lined with easy-to-clean PVC, the bag features the high quality inner textile to protect your boat and keep it clean on the bank. 2 external pockets to store your handset, batteries and chargers plus a third external pocket is custom made to take a solar panel. Neoprene carry handles and shoulder strap ensure comfortable transportation and strong, chunky zips ensure smooth operation.

Find the suitable bag for your bait boat here <https://www.bearcreeks.com/en/baitboat/bags-accessories/>





Waterproof Handset Cover

Keeps your handset dry when used in the rain, featuring a clear panel for easy use and a shoulder strap for easy transportation both when in and out of use. Quick Release Handset Lanyard means your handset is always conveniently to hand when you need both hands free during usage. A quick release clip ensures swift attachment and detachment.

Handset raincover can be purchased here <https://www.bearcreeks.com/en/baitboat/bags-accessories/11/navic-bait-boat-handset-rain-cover?c=84>



Spare Lithium or Lead Acid Batteries For BearCreeks Bait Boats

Spare Lithium or Lead Acid batteries for the BearCreeks series of boats can be purchased here <https://www.bearcreeks.com/en/baitboat/battery-pack-charger/>
Also spare chargers and batteries for handset can be found in our online shop.

Any returned boat that does not have a returned warranty form will not be under warranty. Only the original copy will be accepted, not a photo copy.

We are pleased to offer a full manufacturer's 2 year warranty on all BearCreeks Bait Boats, excluding batteries. Batteries are covered by a 6 month warranty.

2 years of the warranty will cover repair free of charge covering any defects arising from the drive unit and the electronic parts of the boat, faulty material or workmanship not covering damage caused by incorrect use accidental damage and any work carried out by any unauthorized persons.

After the 2 years, the owner has a maximum of 14 days, 2 years after date that boat was registered to extend the warranty into the third year (additional charges apply), if the customer fails to do so, all repairment fees and shipping costs would be charged.

The warranty covers any defects arising from the drive unit and the electronic parts of the boat, faulty material or workmanship.

We strongly suggest keeping all original packing for your boat as in the unlikely event of a fault with your boat suitable packing for such an item of this size is hard to source to ensure boat is received back for repair undamaged.

Please note any boat that is received back damaged due to lack of correct packing will not be repaired under any guarantee.

It is important to retain the retailer's receipt as proof of purchase, please staple a copy of your invoice to your warranty form when you return.

If for whatever reason this product is replaced during the guarantee period, the guarantee on the new product will be calculated from original purchase date.

To qualify for your guarantee, the product must have been used accordingly to the instructions supplied.

BearCreeks GmbH will not hold responsibility for any consequential losses due to bait boat failure.

By signing this warranty form you are agreeing to all terms stated. Please note no confirmation will be sent back when warranty form is received.

Exclusions

Products shall not be liable to replace or repair under terms of guarantee where:

1. The fault has been caused or is attributable to accidental use, misuse, negligent or used contrary to the manufactures recommendations or where the fault has been caused by power surges or damage caused in transit.
2. Repairs have been attempted by persons other than our service staff.
3. The product has been used for hire purposes.
4. The product is second hand.

This guarantee is offered as an additional benefit and does not affect your statutory rights as a consumer.

Your warranty

Please fill in this form on date of purchase and send back to address below left.

Return form to:

BearCreeks GmbH

Marie-Curie-Str. 6

85055 Ingolstadt

Germany

Email: service@bearcreeks.com

www.BearCreeks.com

9 Warranty

We offer you a 24 months warranty from the date of purchase. The warranty covers any defects arising from the drive unit and the electrical and electronic parts of the boat, faulty material and workmanship. It does not cover batteries, damage arising from improper use, breakage, or normal wear of the boat or associated equipment. The guarantee is invalidated if repairs or modifications are undertaken by unauthorized persons.

The guarantee period for the rechargeable lead-acid battery and the rechargeable Ni-MH batteries is 6 months from the date of purchase.

Please complete and return the form overleaf to register your BearCreeks Warranty.

BearCreeks Bait Boats 2 Year Warranty

Please use block capitals and return to address on facing page

NAME	
ADDRESS	
POST CODE	
TELEPHONE NUMBER	
EMAIL ADDRESS	
PURCHASED FROM	
DATE OF PURCHASE	
SERIAL NUMBER	

Serial number can be found on a white sticker on outside and inside of packaging box and on back of handset or under the boat lid facing forward.

SIGNED